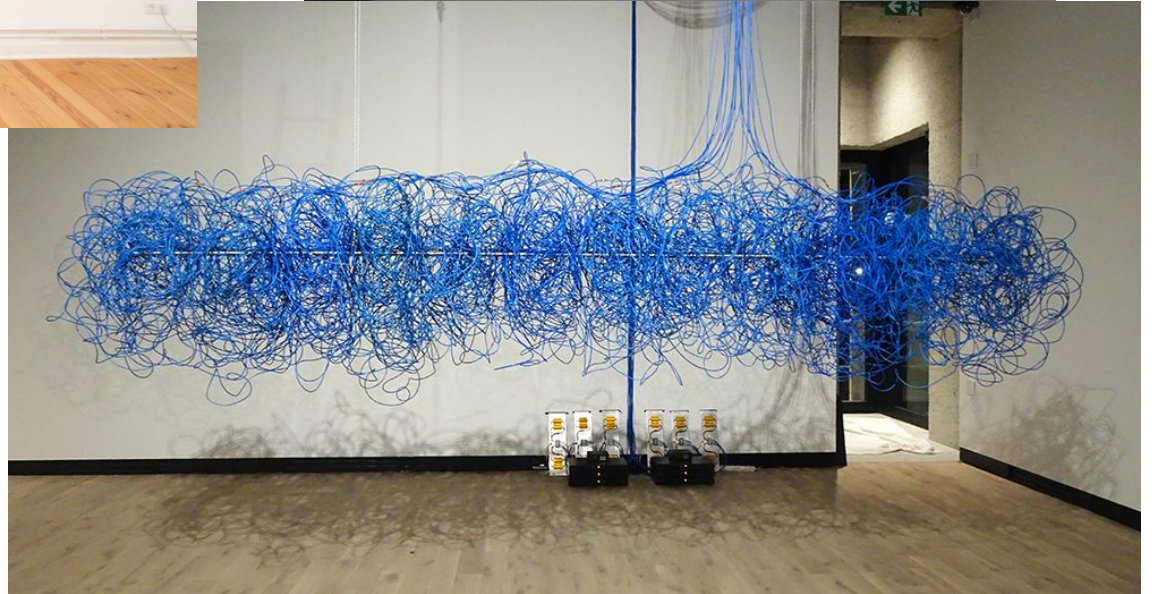
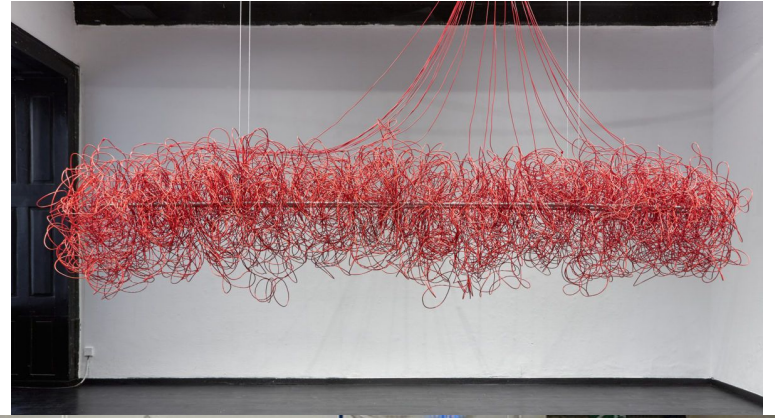
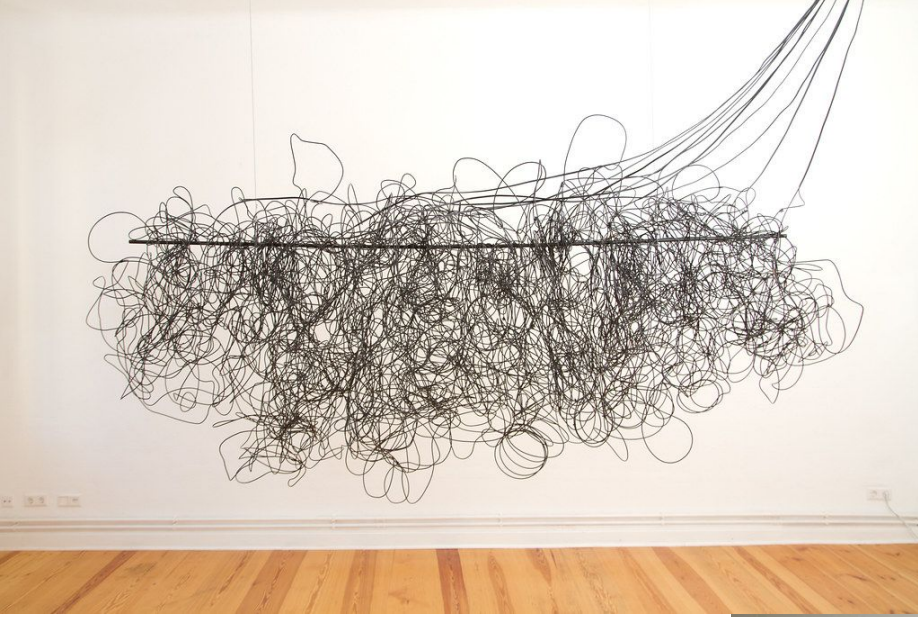


CLOUD

Christina Kubisch

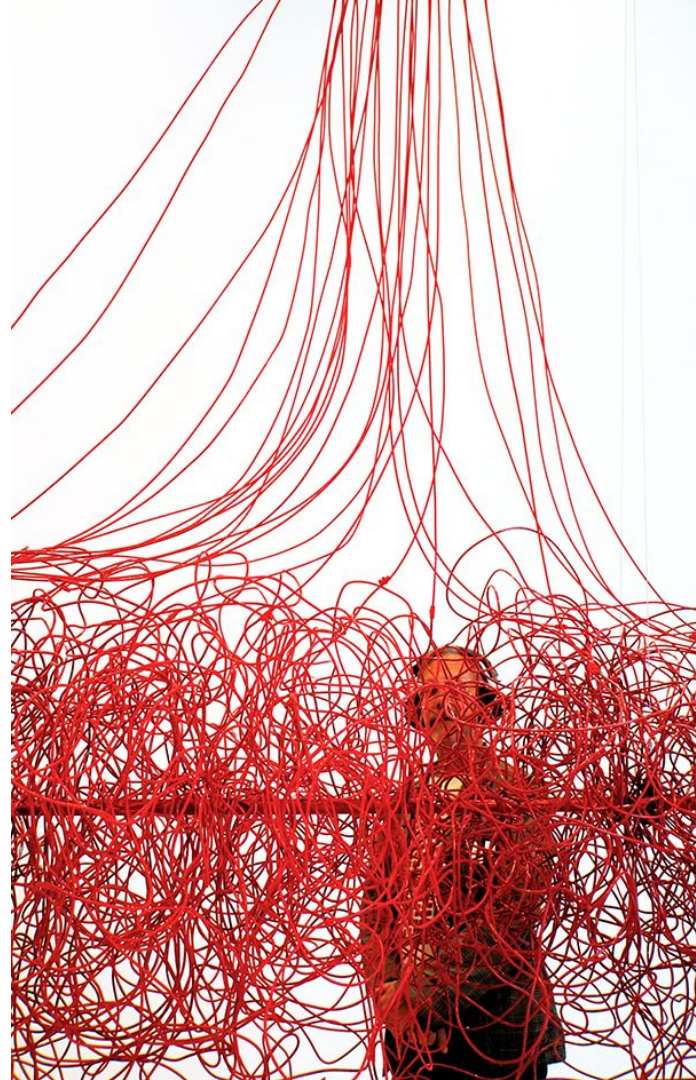


Cloud, 2011 - ongoing

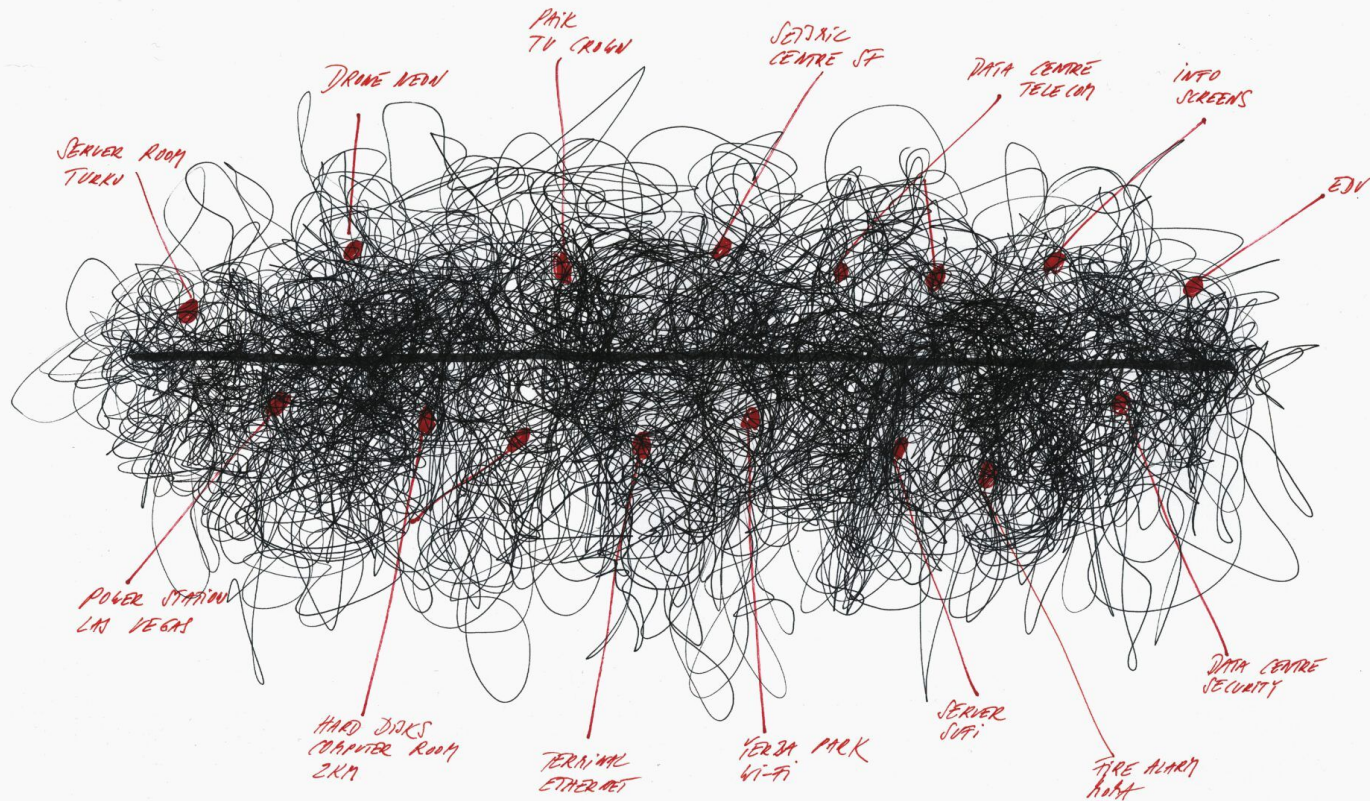
electromagnetic sound installation,
electrical cable, electromagnetic
headphones, 12 channel composition

“Cloud” has been exhibited in different site
specific arrangements and always new
sound combinations

<https://christinakubisch.de/installations/cloud-induction>



CLOUD MOMA
San Francisco



Electromagnetic induction

Electromagnetic induction is the creation of an electro-motive force (EMF) by way of a moving magnetic field around an electric conductor and, conversely, the creation of current by moving an electric conductor through a static magnetic field.



magnetic sensor?



current?



